

# RX-2™ Coudé®

▲ EPIMED



## RX-2™ Coudé® Blunt Stylet



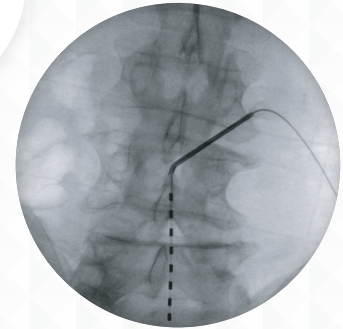
The patented RX-2™ blunt obturating stylet extends from the tip to push tissue structures away from the cutting edge during needle rotation. Simply place the luer lock obturating stylet into the RX Coudé® Needle after epidural placement is confirmed.



# RX Coudé®



The patented RX Coudé® Epidural Needle can help needle tip placement and positioning of epidural catheters. “The RX Coudé® can be positioned so that the front bevel forms a flat surface parallel to the ligamentum flavum and the dura, limiting the chance of dural puncture. Once epidural placement is confirmed, the needle can be rotated towards your target site.”<sup>1</sup> The RX rear heel is rounded to resist catheter shearing during placement.



Fluro Image of Actual Epidural Placement  
Courtesy of Claudio Feler, M. D.



## Contact Your Local Epimed Representative Today

For more product information and catalog numbers

800.866.3342 | 972.373.9090

[myorder@epimed.com](mailto:myorder@epimed.com)

1. Statement Courtesy of Dr. Gabor B. Racz, M.D., FIPP, ABIPP, DABPM.