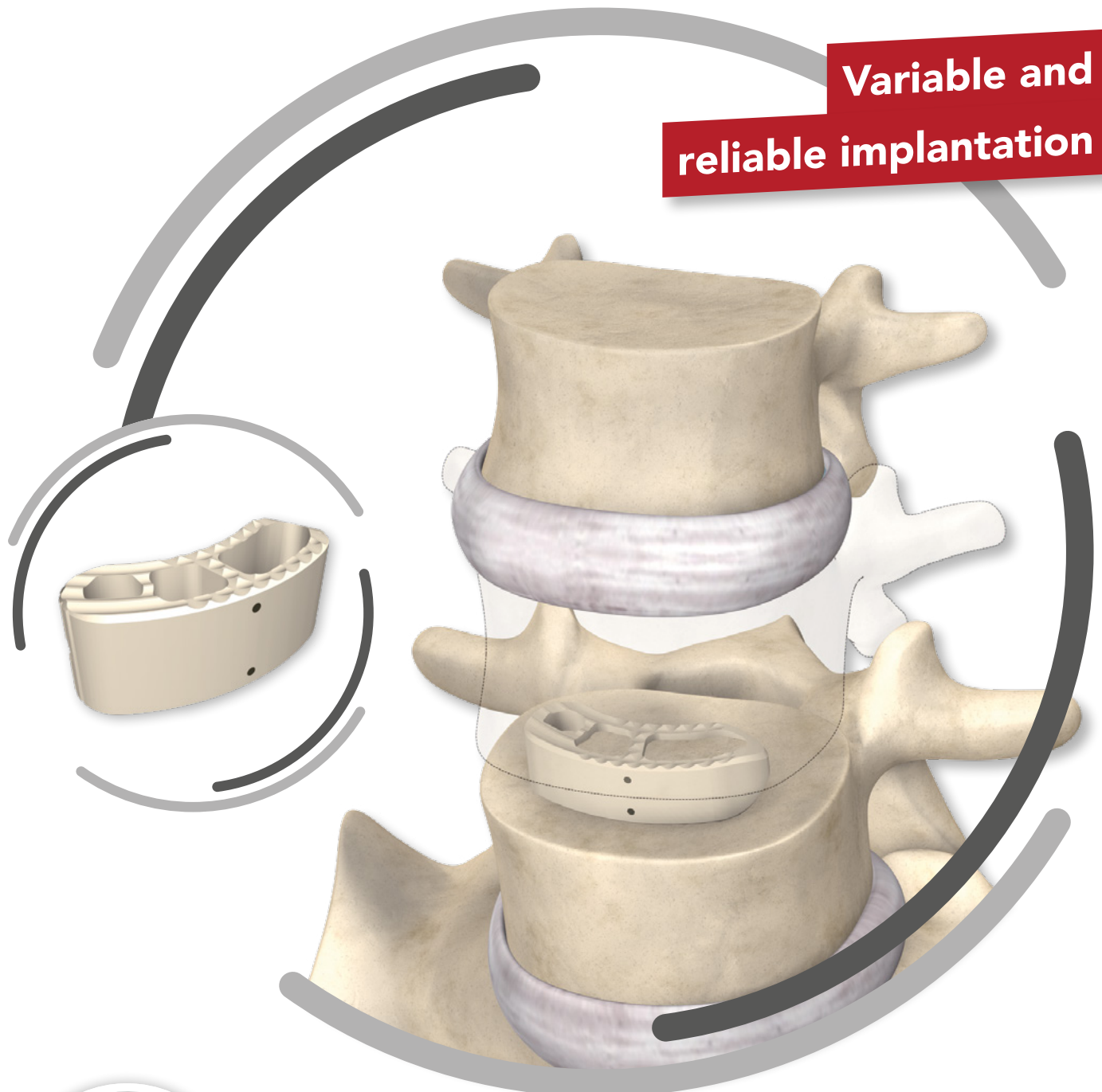


MOBIS[®] II PEEK

Transforaminal Lumbar Interbody Fusion

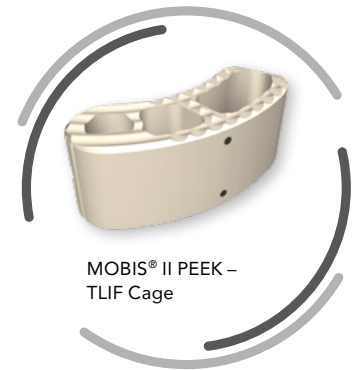
Variable and
reliable implantation



MOBIS® II PEEK

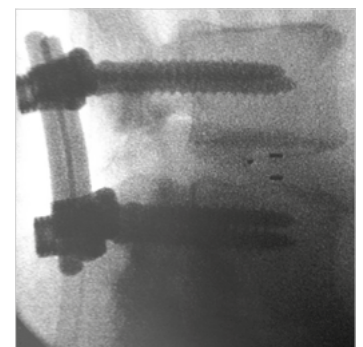
Transforaminal Lumbar Interbody Fusion

MOBIS® II is placed by a TLIF (Transforaminal Lumbar Interbody Fusion) approach in the L1–S1 spinal region. Its arc-like profile with large hollow openings guarantees a large contact surface with the bone. With its shape MOBIS® II is an ideal fit to the anterior curve of the vertebral body. The large fenestration in the implant permits the cage to be packed with natural or synthetic bone graft substitute such as KAINOS® Inject. The inserted cage, combined with additional posterior instrumentation, leads to immediate biomechanical stabilisation. This establishes the ideal conditions for vertebral body fusion. The large selection of implants provides for a high degree of intraoperative flexibility and ensures restoration of the intervertebral space. In addition to plane-parallel implants, the MOBIS® II cage is also available with a 5° lordotic angle.



Product-specific advantages

- **Controlled variable insertion**
 - In four steps of 0°–72° (4x 18°) to the final position
 - Slender design of the instrument for enhanced intraoperative visibility
- **Open implant design**
 - Can be packed with natural or synthetic bone graft substitute
 - Promotes osseointegration
- **Flattened implant apex**
 - Easier implantation with self-distracting design
 - No removal of the posterior edges of vertebral bodies
- **Smooth lateral surfaces**
 - Less preparation required
 - Protection of nerve roots
- **Proven SIGNUS toothed cage design**
 - Secure anchoring in the bone owing to high primary stability
 - Reduced risk of implant migration
- **Tantalum markers**
 - Easy and reliable identification and positioning of the implant



MOBIS® II + MONOPOLY™ II

Implants

Height* (mm)	0° Lordosis	5° Lordosis	Filling volume
7	B20070929	B25070929	0,66
8	B20080929	B25080929	0,75
9	B20090929	B25090929	0,85
10	B20100929	B25100929	0,94
11	B20110929	B25110929	1,04
12	B20120929	B25120929	1,13
13	B20130929	B25130929	1,23

* Implant height without tooth height
 The implant is also available in ST - structural titanium (MOBIS® II ST).

All implants are in individual sterile packaging for immediate use.

Width: 9 mm
 Length: 29 mm

Additional sizes available upon request.

