

Camsource[®] LED

Camera & Light Source System

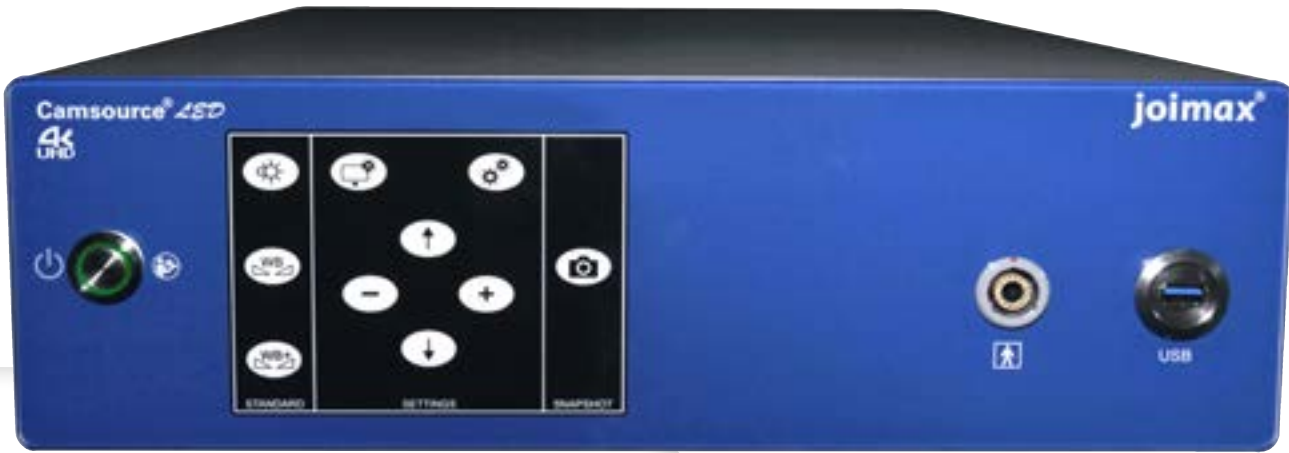
COMBINED CAMERA AND LIGHT
SOURCE SYSTEM WITH UNIQUE
IMAGE QUALITY



BRILLIANT RESOLUTION AND
EXCELLENT ILLUMINATION



TRUE BRILLIANCE – IN 4K-RESOLUTION

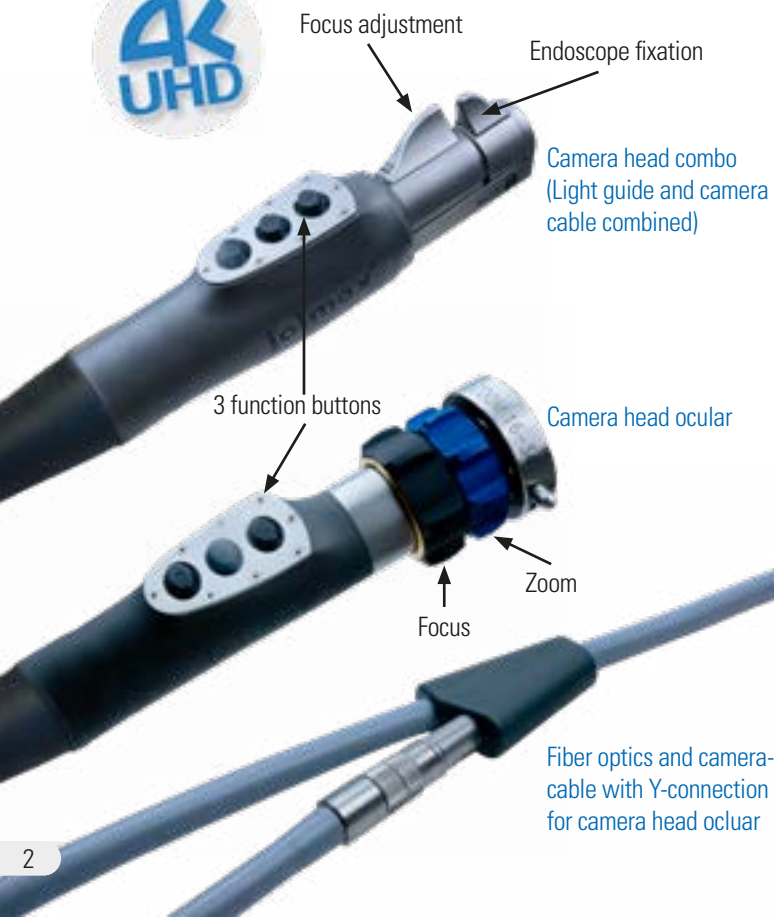


FUNCTIONS OF THE CAMERA CONTROL SYSTEM

- White Balance+ including automatic scaling optimization
- One-screen-display (OSD) with settings of all parameters
- Stepwise zoom function
- Flip (↔) and mirror (↕) function
- Adjustment functions of sharpness, contrast, saturation, color, window and boost
- Image capture function

Perfect images to support endoscopic spine surgery – because lighting, optical system and image processing are ideally matched.

The Camsource® LED offers high resolution imaging with the latest CMOS technology to provide brilliant images, especially in combination with the joimax® endoscopes and flat screen monitors. The constantly high color temperature of the new LED light source ensures an ideal and real color reproduction of every endoscopic intervention. The integrated LED light source lasts about 30,000 hours and is maintenance-free. All parameters are set via an intuitive touch panel. In addition, the Camsource® LED is ready for joimax® “Command” integration, the remote control of the entire system via tablet. The high-quality glass front ensures safe cleaning.



REPROCESSABLE

THE NEW CAMERA HEAD SYSTEMS

- High resolutions with latest CMOS sensor technology
- Two camera heads available operated by the same control unit:
 - **Combo camera head** with single-cable technology, compatible with all joimax® combo endoscopes
 - **Ocular camera head** with split camera and light cable for other endoscopes
- Improved usability by three camera head buttons offering individual programmable remote functions like zoom, flip, snapshot and others
- **Reprocessable** (Combo camera head: STERRAD; Ocular camera head: Autoclave & STERRAD)

joimax® ENDOSCOPES (FHD/4K UHD) IN COMBO- AND OCULAR VERSION

The joimax® FHD/UHD Endoscopes provide high depth of field, excellent brightness (no loss of brightness at the edges) and brilliance. Moreover, the endoscopes have a very solid structure and are extremely durable due to specific stainless steel and best quality optics.

ENDOSCOPE FEATURES

- Autoclavable at 134°C / 273°F for 18 minutes (prion program)
- Single-cable technology
- Different working lengths, outer diameters and working channel diameters available



208 mm 171 mm 125 mm working length

Foramino-, Lamino- and Multiscopes,
combo version

208 mm 171 mm 125 mm working length

Foramino-, Lamino- and Multiscopes,
ocular version

100 mm Arbeitslänge

Cervical hybrid scope
Only available in Combo version



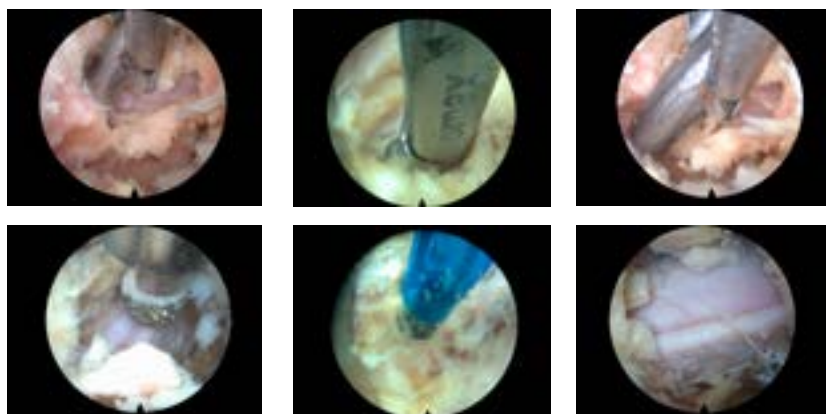
MEDICAL DISPLAYS IN FHD AND 4K UHD

Whether ultrasound, X-ray or endoscopy: The best examination technique is only as good as the display used for visualization. For the new Camsource® LED, joimax® offers a 26" and a 32" high resolution display plus a 32" 4K display which presents the joimax® Camsource® LED as a Ultra High Definition System.

All monitors deliver brilliant visualization during surgery. They have a variety of practical features, such as the buttonless OSD (On Screen Display) menu or the picture-in-picture function.

TECHNICAL DETAILS

- TFT-Monitor 26" and 32"
- High resolution: 1920x1080p FHD / 3840x2160p UHD
- Viewing angle: horizontal 178°, vertical 178°
- Smooth overall surface, EMC tested, splash water protected
- Connections: DVI, HD-SDI, RGB, S-Video, Video
- Automatic signal recognition
- Picture-in-picture function
- OSD touch control panel



REF	DESCRIPTION
CSFHD01SC	Camsource® LED System Combo Including: Camsource® LED Control Unit, Camsource® LED Camera Head Combo, HDMI Cable, DVI Cable, BNC Cable, USB Flash Drive 16GB



CSFHD01SOZ	Camsource® LED System Ocular, zoomable Including: Camsource® LED Control Unit, Camsource® LED Camera Head Ocular, Camsource® LED Video Objective ocular (zoomable), Fibre optic cable, HDMI Cable, DVI Cable, BNC Cable, USB Flash Drive 4 GB
-------------------	---

SINGLE COMPONENTS

CSFHD01CC	Camsource® LED Camera Head Combo
------------------	----------------------------------



CSFHD01CO	Camsource® LED Camera Head Ocular
------------------	-----------------------------------



ACCESSORIES

CSFHD01COAS	Fibre Optic Cable Adapter
CSLC0252	joimax® Fibre Optic Cable
CSFHD01COVZ	Camsource® LED Videolens zoomable
CSCC1223	Camsource® Camera Cable Cover (coating)
JMUSBS10	joimax® USB Flash Drive 16GB

ENDOSCOPIC DEVICES

The expert solution for interventions on the spinal column and in neurosurgery. All devices are aligned with each other and have been specially developed for sensitive structures.



The image shows one of various mounting options.

- 1 **Vitegra®**
Visual Integration System
- 2 **Camsource® LED**
Camera & Light Source System
- 3 **Intracs® em**
Integrated Navigation Tracking & Control System
- 4 **Shrill®**
Shaver Drill System
- 5 **Endovapor® 2**
Multi Radio Frequency System
- 6 **Versicon®**
Versatile Irrigation Control
- 7 **JFMS 2620 | 3220 | 314KB**

joined minimal access

joimax® GmbH
Amalienbadstrasse 41, RaumFabrik 61
76227 Karlsruhe, Germany

joimax®, Inc.
140 Technology Drive, Suite 150
Irvine, CA 92618, USA

joimax® Asia
Rykadan Capital Tower,
135 Hoi Bun Road,
Kwun Tong, Hong Kong

Phone +49 (0) 721 255 14-0
Fax +49 (0) 721 255 14-920
E-Mail info@joimax.com
Net www.joimax.com

Phone +1 949 859 3472
Fax +1 949 859 3473
E-Mail info@joimaxusa.com
Net www.joimax.com

Phone +852 29116418
E-Mail asia@joimax.com
Net www.joimax.com

joimax® BROCAMLEDEN; TD_CAFU_14_PI_001, Rev. 002, Oct. 2020